

\$336,900



2,250 SQFT | 3 - 4 BEDROOMS | 3 BATHS

STAND OUT FEATURES

EXTERIOR

- James Hardie Siding
- Charming Bahama shutters on front 2nd floor windows
- Fully sodded lawn with multi-zone Irrigation System
- Large screened porch with ceiling fan/light

INTERIOR

- Stunning 2-story ceiling and wainscoting in Foyer
- 9' ceilings in main living areas and throughout upstairs
- Large Dining area with wainscoting
- Accent beams span the ceiling in the Great Room
- Office or optional 4th bedroom for flexibility!
- 2nd Floor Laundry Room for convenience & ease

KITCHEN

- 42" maple cabinets in a variety of paints & stains with soft close doors & drawers plus under cabinet lighting
- Tile back splash & Granite countertops
- Whirlpool Stainless Steel Appliance Package: electric cooktop with range hood, dishwasher, wall oven & microwave combo
- Stainless steel farmhouse sink
- Large closet pantry with barn door
- Oversized prep island with storage cabinets below

MASTER SUITE

- Located on the 2nd Floor
- Presidential ceiling with ambient rope lighting

MASTER BATH

- Tiled master bath shower with mosaic accent strip, bench seat and storage niches
- Dual shower heads include a handheld & stationary
- Drop-in tub with tile surround & privacy glass window
- Dual sink vanity with coordinating framed mirrors
- Linen closet conveniently located inside the bathroom
- Pocket door to Water Closet
- Stunning Master bath upgrade option available!

RIPTIDE EXTRAS


- Multiple fireplace options from which to choose!
- Hardwood floors throughout the main living spaces
- Lyric Alarm & Comfort System that can be controlled via app!
- Navien Tankless Gas Water Heater
- HERS Certified by RESNET energy efficiency!
- 7 1/4" baseboards throughout plus 3 1/4" door and window casings with custom window sills!


THE BOURNE DALE

2,250 SQ. FT.

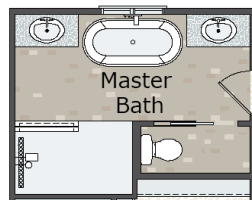
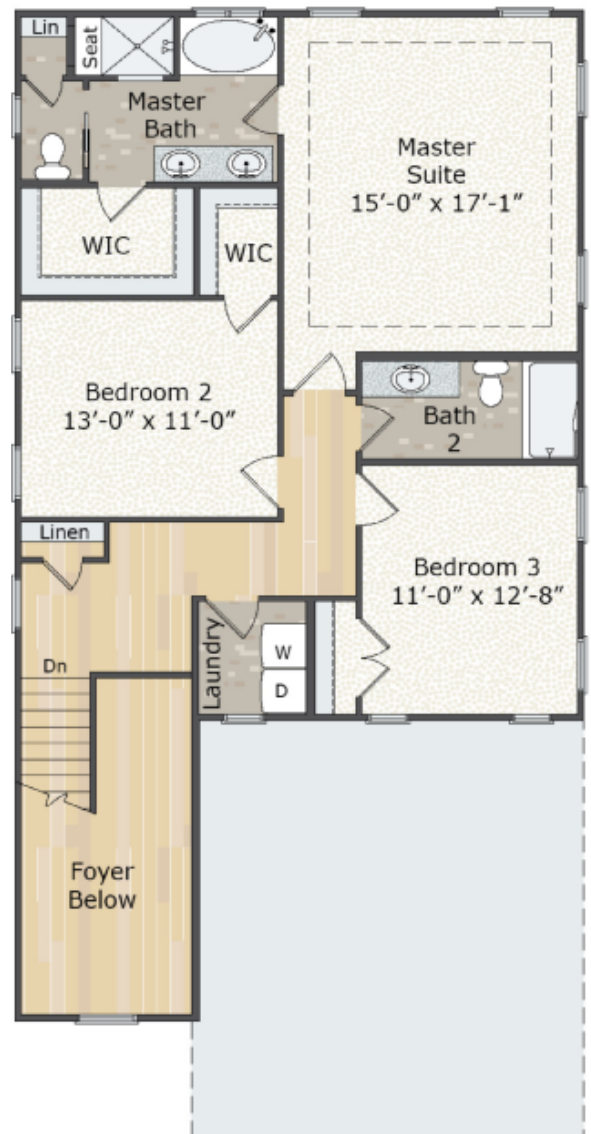
1ST FLOOR




Fireplace Option #1
45" Dual Sided


Fireplace Option #2
45" Linear

2ND FLOOR



Master Bath
Option #1